

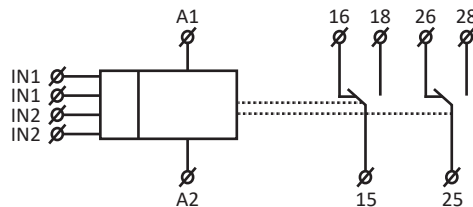
# Timetec-17F-2D

## Programmable Digital Time Relay



The Timetec-17F-2D is a Programmable Digital Time Relay with a 4 digit red LED display. The control and programming is achieved via 3 buttons, with a user friendly menu.

- Absolute accuracy in timer setting
- Time countdown shown on display
- Galvanically separated START and STOP control inputs
- 2 independent timers with a combination of 2 inputs and 2 outputs
- 16 selectable functions
- 30 memory points
- Supply voltage 12Vac/dc - 240Vac/dc
- Three module width, DIN-Rail mounting



Order Code

**Timetec-17F-2D**

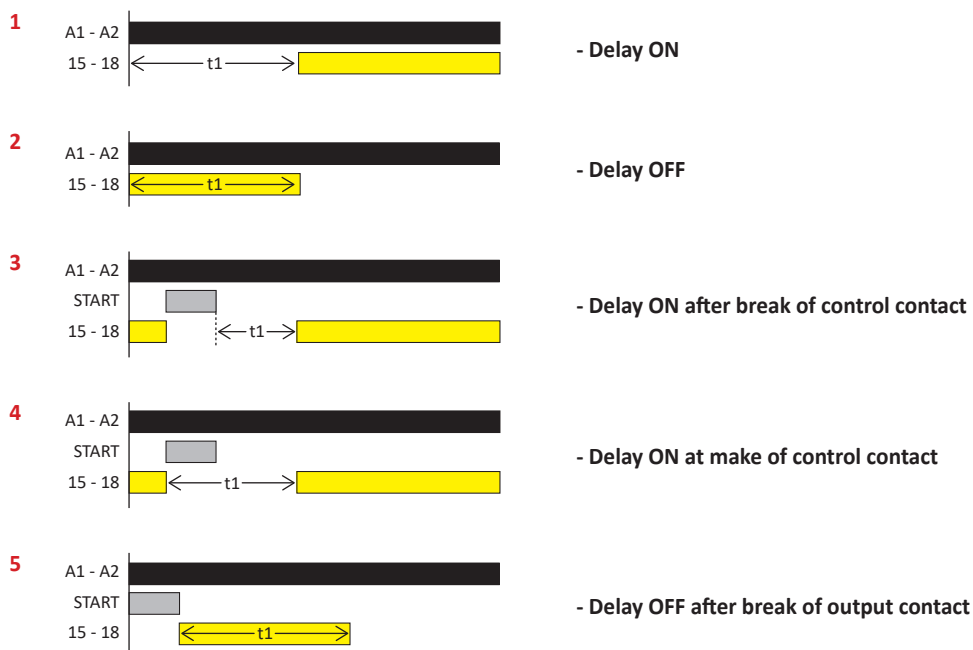
### Timetec-17F-2D Technical Specification

Number of Functions	16
Supply Terminals	A1 - A2
Voltage Range	12Vac/dc - 240Vac/dc (AC 50 - 60Hz)
Max. Power Input (Apparent / Loss)	AC 0.5 - 2.5VA / DC 0.4 - 2.5W
Max. Dissipated Power (Un + Terminals)	5.5W
Supply Voltage Tolerance	-15%, +10%
Time Ranges	0.01s - 100 hrs
Repeat Accuracy	0.2% - Set Value Stability
Temperature Coefficient	0.01% / °C, at = 20°C
Time Range	0.01s - 99h, 59min, 59s, 99ss
Minimal Time Step	0.01s
Time Deviation	0.01% of Set Value
Setting Error	0%
Setting, Reset Accuracy	100%
Digital Places	Selected via Program
Changeover Contacts	2 x Changeover / SPDT (AgNi / Silver Alloy)
Rated Current	16A / AC1
Breaking Capacity	4000VA / AC1, 384W / DC
Inrush Current	30A / < 3s
Switching Voltage	250Vac / 24Vdc
Output Indication	Red LED
Mechanical Life	15,000,000 Cycles
Electrical Life (AC1)	35,000 Cycles

## Timetec-17F-2D Technical Specification

Control Input Power	AC 0.01 - 0.25VA
Glow Tubes Connections	No
Impulse Length	Min. 1ms / Max. Unlimited
Reset Time	Max. 200ms
Display Colour	Red
Number and Height of Digits	4 Positions with separating colon, height 10mm
Luminance	2200 - 3800 ucd
Light Wavelength	635nm
Brightness Setting	20% - 100% - adjustable in 10 Steps
Memory Locations	30 for Time Ranges and Service Function
Data Stored for	Min. 10 Years
Operating Temperature	-20°C to 55°C
Storage Temperature	-30°C to 70°C
Electrical Strength	4kV (Supply Output)
Operating Position	Any
Mounting	DIN-Rail EN 60715
Protection Degree	IP40 from Front Panel / IP20 Terminals
Overvoltage Category	III
Pollution Degree	2
Max. Cable Size (mm <sup>2</sup> )	Solid Wire max. 1x 2.5 or 2x 1.5 / Stranded Wire with Ferrule max. 1x 1.5 (AWG 12)
Dimensions	90 x 52 x 65mm
Weight	140g
Standards	EN 61812-1, EN 61010-1

## Timetec-17F-2D Functions



## Timetec-17F-2D Functions

- |            |  |   |
|------------|--|---|
| <b>6</b>   |  | - Delay OFF at make of output contact                       |
| <b>7</b>   |  | - Delay OFF at break of control contact with instant output |
| <b>8</b>   |  | - Delay OFF at make of control contact with delayed output  |
| <b>9</b>   |  | - Cyclor beginning with impulse                             |
| <b>10</b>  |  | - Cyclor beginning with pause                               |
| <b>11</b>  |  | - Cyclor beginning with impulse with variable interval      |
| <b>12</b>  |  | - Cyclor beginning with pause with variable interval        |
| <b>13</b>  |  | - Generator of impulse                                      |
| <b>14</b>  |  | - Changeover Star / Delta                                   |
| <b>15A</b> |  | - Shift of pulse by 2 times                                 |
| <b>15B</b> |  | - Shift of impulse by 2 times                               |
| <b>16A</b> |  | - Extended pulse by 2 times                                 |
| <b>16B</b> |  | - Extended impulse by 2 times                               |